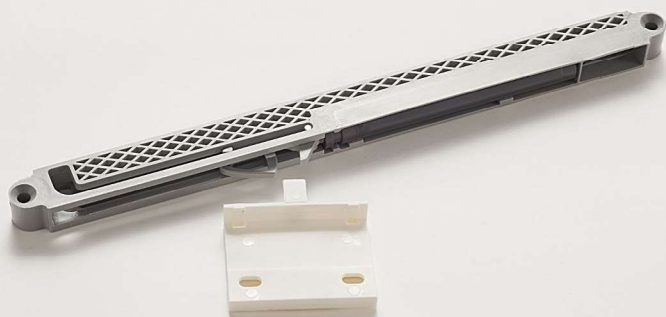


# IMPAZ *sylent*

**sylent**



- Soft-close and self-close mechanism for Impaz drawers
- Drilling templates for quick and easy retrofitting

## Commercial Packing

### Impaz Sylent Set

RSC.2530.21

## Industrial Packing

### Sylent Damper

RSC.2500-01.21

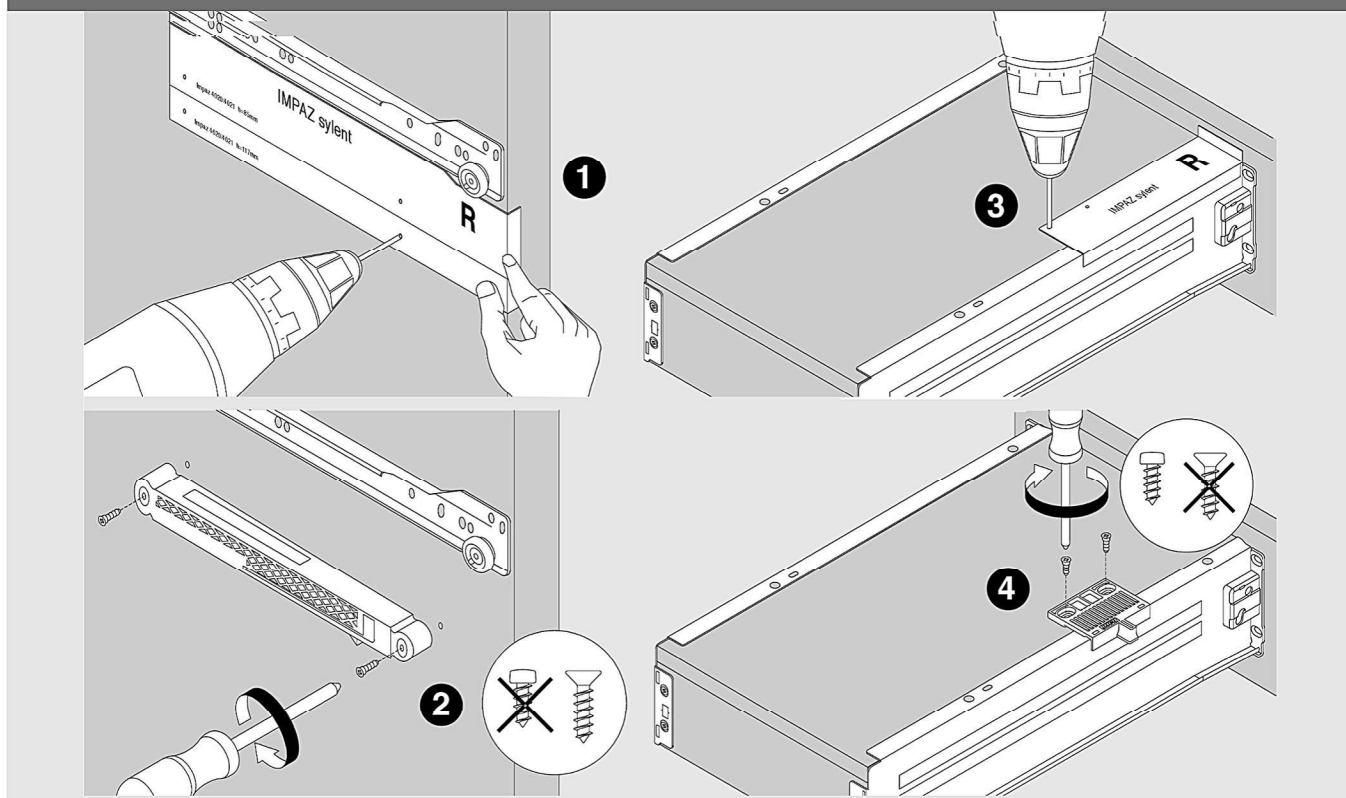
### Impaz Activator

RSC.2500-03.01

### Screw Set For Installation

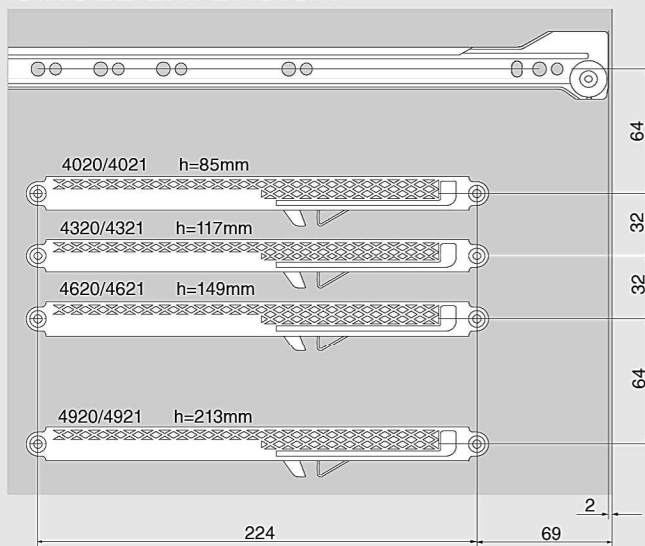
RSC.2500-A01.NI

## Installation Using Marking Template

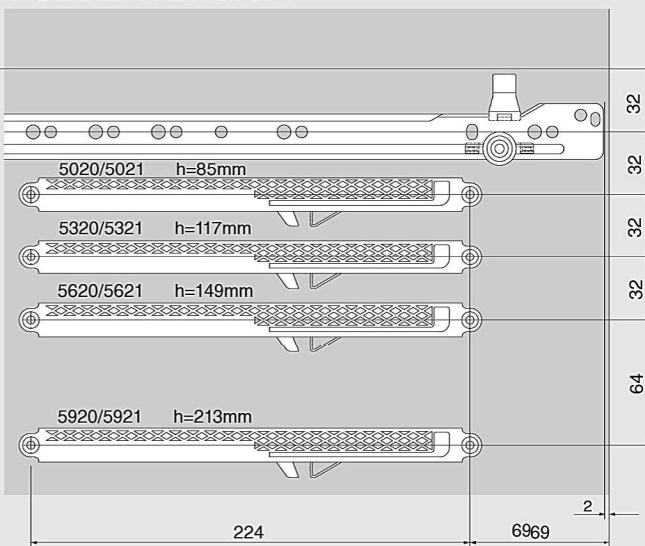


## Installation By Measurements

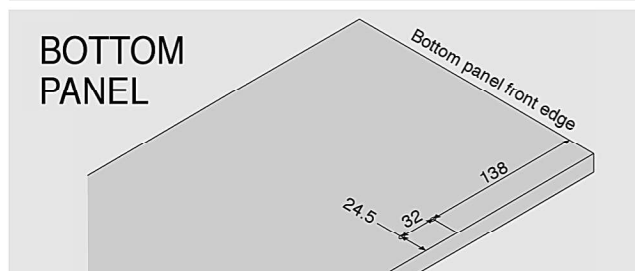
### SINGLE EXTENSION



### FULL EXTENSION



### BOTTOM PANEL



### NOTE

- 1) Drawer using only one RSC.2530 must install it on the right side of the cabinet.
- 2) Drawer widths 800mm and above requires a RSC.2530 to be installed on each side of the cabinet.
- 3) Add 5mm to mounting position of cabinet profile for space clearance of the activator.
- 4) All measurements are quoted in millimeter.