

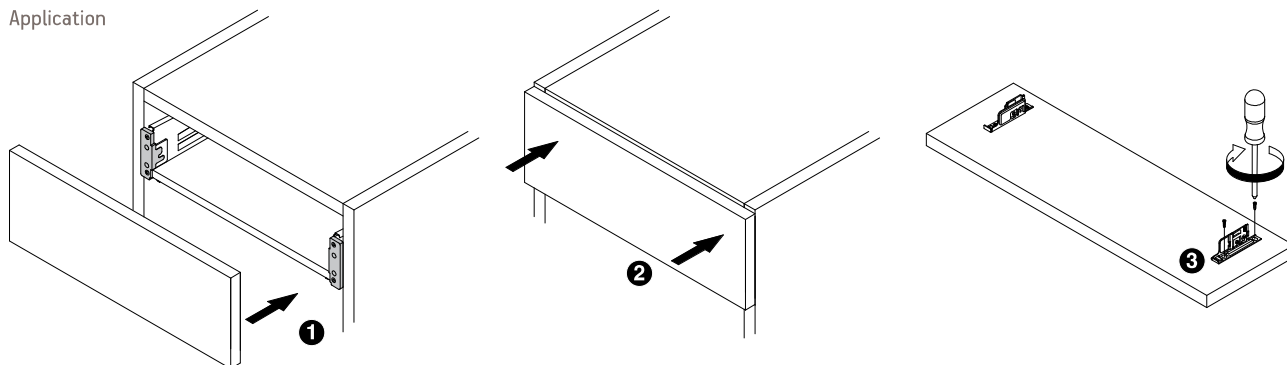
Harn Impaz



Impaz Drawer Front Marking Jigs – Left/Right

| Part No. | Sales Unit |
|-----------|------------|
| RMD.91040 | Ea |

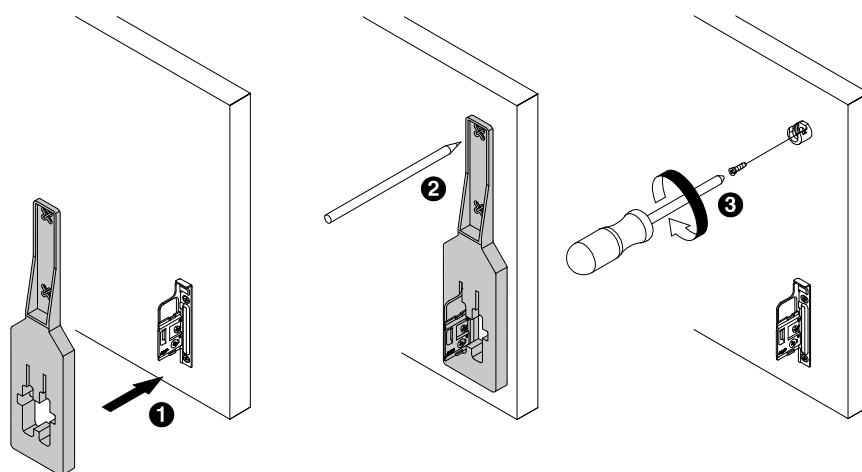
Application



Impaz Rail Marking Template – For marking single & double railing

| Part No. | Use for all clip-on brackets; RBF11240, RBF12240, RBF13240 | Sales Unit |
|-----------|--|------------|
| RMD.92240 | | Ea |

Application

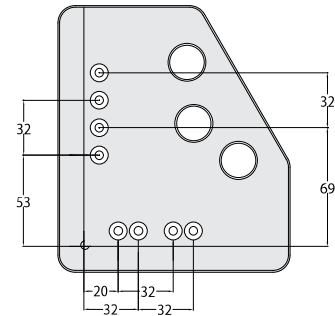
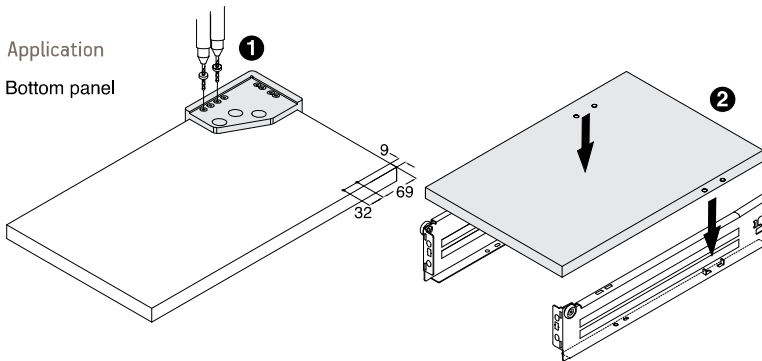


Impaz Drilling Jig – For drilling or marking bottom panel & back panel

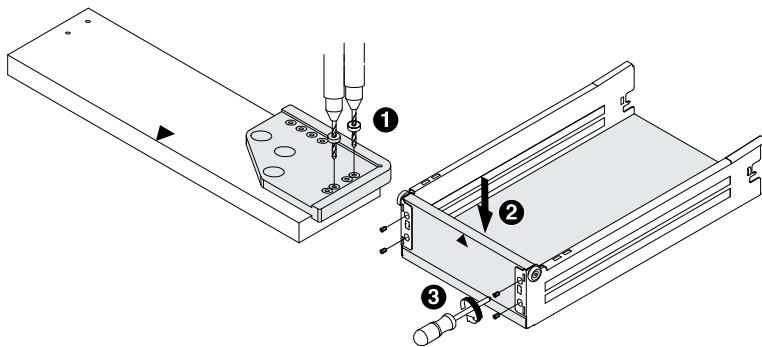
| Part No. | Sales Unit |
|------------|------------|
| RMD.930.00 | Ea |



Application
Bottom panel



Back panel



Impaz Insertion Ram – For insertion of press-in front fixing bracket

- Machine insertion ram

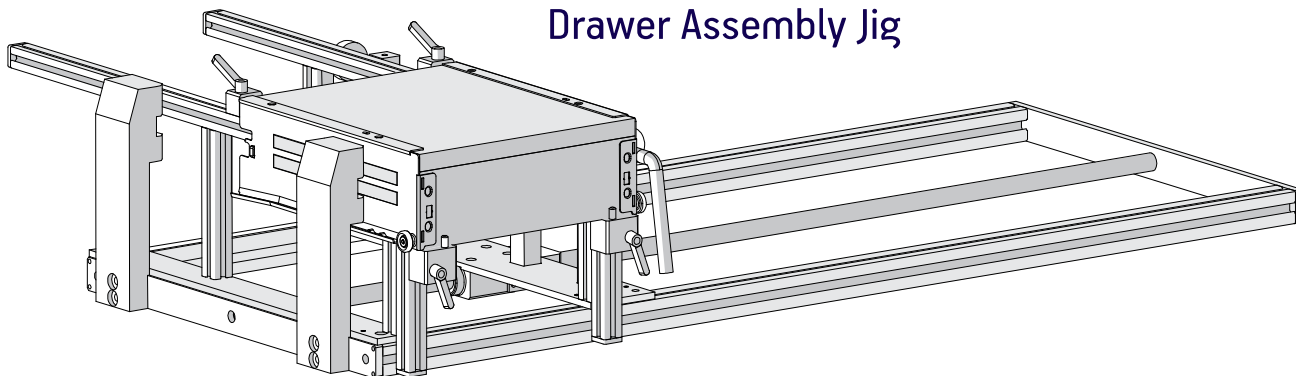
| Part No. | Use for bracket | Sales Unit |
|-----------|-----------------|------------|
| RME.95540 | RBF12240 | Ea |
| RME.96040 | RBF17040 | Ea |

- Hand insertion ram

| Part No. | Use for bracket | Sales Unit |
|-----------|-----------------|------------|
| RME.95541 | RBF12240 | Ea |
| RME.96041 | RBF17040 | Ea |



Impaz Assembly Devices – Drawer Assembly Jig

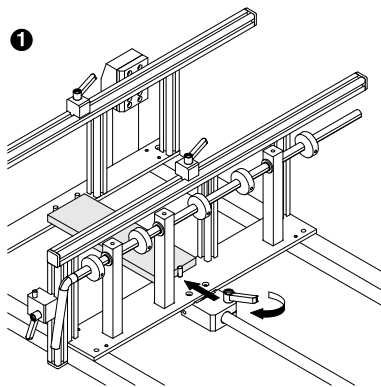


- Designed for 4020, 4320, 4620, 5020, 5320 and 5620 drawer assembly
- Drawer side lengths 250 to 550 mm
- Cabinet widths 300 to 900 mm
- Maximum back panel height of 199mm

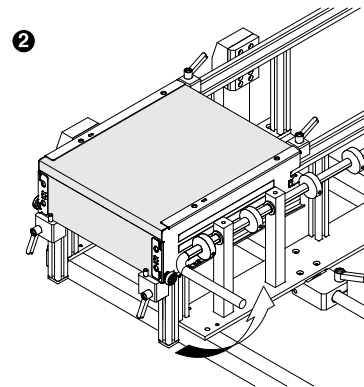
| Part No. | Sales Unit |
|--------------|------------|
| RMM.97040.AL | Ea |

Assembly of Drawers

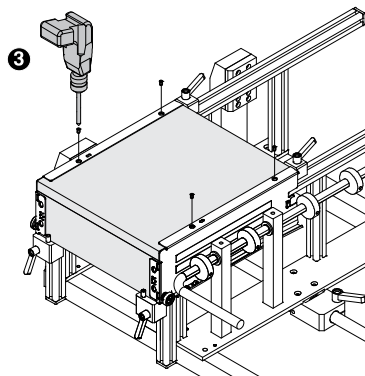
Application



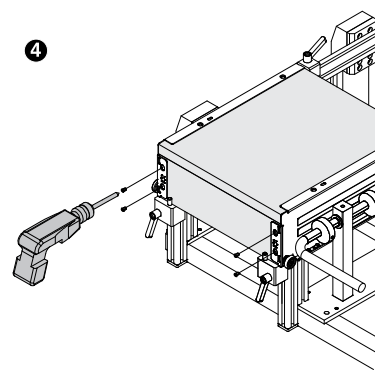
Setting desired drawer length and width.



Insert back and bottom panels. Slide in drawer sides. Activate locking clamps to hold drawer together.



Secure bottom panel using screws.



Secure back panel using screws.