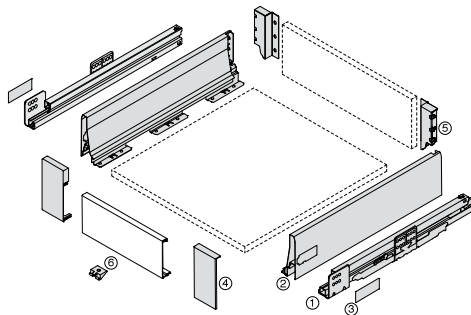
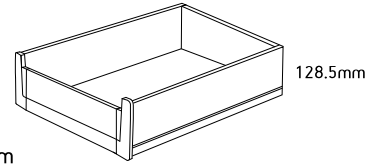


Harn Ritma



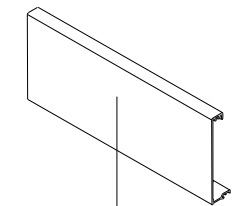
Ritma Cube Inner Drawer – T

- Soft close roller bearing concealed runners
- Full extension with synchro control
- Steel drawer side 128.5mm
- Load capacity of 35kg or 60kg
- Quick assembly
- Silent integrated cushioning system
- Integrated lateral stabiliser



	Kit Part No.	Size	Sales Unit
White 35kg	RKI11527T.WH	270mm	Kit
	RKI11535T.WH	350mm	Kit
	RKI11540T.WH	400mm	Kit
	RKI11545T.WH	450mm	Kit
	RKI11550T.WH	500mm	Kit
	RKI11555T.WH	550mm	Kit
White 60kg	R6RKI11545T.WH	450mm	Kit
	R6RKI11550T.WH	500mm	Kit
	R6RKI11555T.WH	550mm	Kit

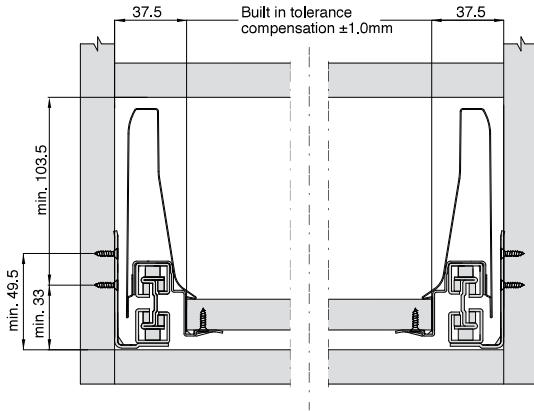
Cutting Dimensions



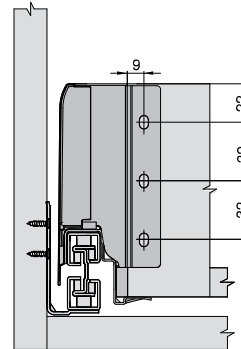
Internal Cabinet Width - 132mm

*Grey parts are included in kit

Space Requirements & Front Installation Dimensions



Back Installation Dimensions



Cabinet Profile Screw Positions

35kg

Drawer Length

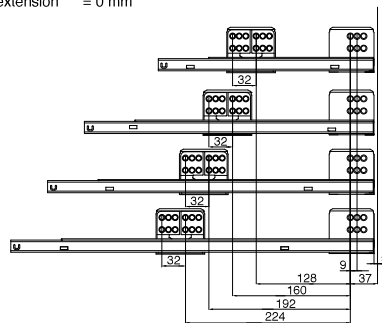
Min. internal cabinet depth = drawer length + 3 mm
Actual loss of extension = 0 mm

270, 300, 350 mm

400 mm

450 mm

500, 550 mm



60kg

Drawer Length

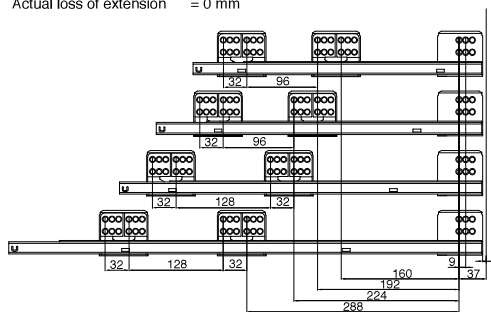
Min. internal cabinet depth = drawer length + 3 mm
Actual loss of extension = 0 mm

400 mm

450 mm

500, 550 mm

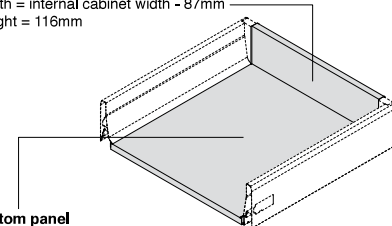
600, 650 mm



Cutting Dimensions for 16mm Chipboard

Back panel

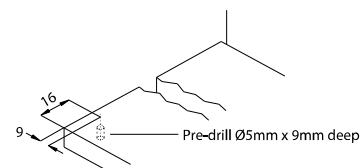
Width = internal cabinet width - 87mm
Height = 116mm



Bottom panel

Width = Internal cabinet width - 75mm
Length = drawer length - 24 mm

Pre-drilling Dimensions of Bottom Panel for fixing Euro Screws



For drawers over 700mm in width we recommend the use of the Euro Orvel Lock & Support for Wide Drawers. Ref page 3.84.