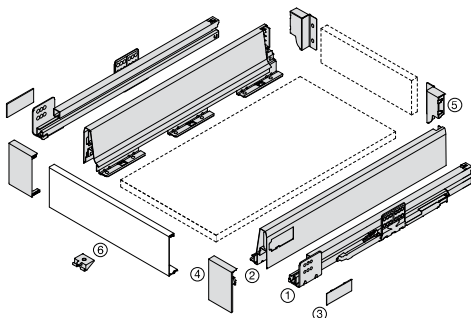
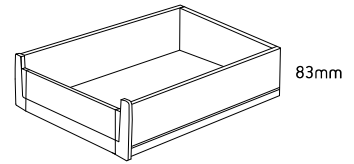


Harn Ritma



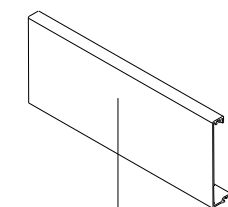
Ritma Cube Inner Drawer – S

- Soft close roller bearing concealed runners
- Full extension with synchro control
- Steel drawer side 83mm
- Load capacity of 35kg or 60kg
- Quick assembly
- Silent integrated cushioning system
- Integrated lateral stabiliser



	Kit Part No.	Size	Sales Unit
Round Railing Set			
White 35kg	RK18327S.WH	270mm	Kit
	RK18335S.WH	350mm	Kit
	RK18340S.WH	400mm	Kit
	RK18345S.WH	450mm	Kit
	RK18350S.WH	500mm	Kit
	RK18355S.WH	550mm	Kit
White 60kg	R6RK18345S.WH	450mm	Kit
	R6RK18350S.WH	500mm	Kit
	R6RK18355S.WH	550mm	Kit

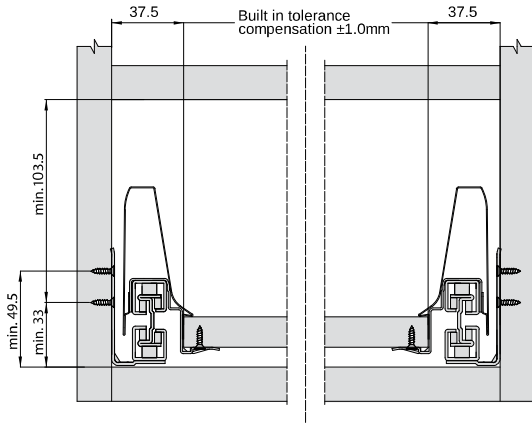
Cutting Dimensions



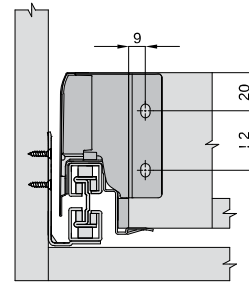
Internal Cabinet Width -132mm

*Grey parts are included in kit

Space Requirements & Front Installation Dimensions



Back Installation Dimensions



Cabinet Profile Screw Positions

35kg

Drawer Length

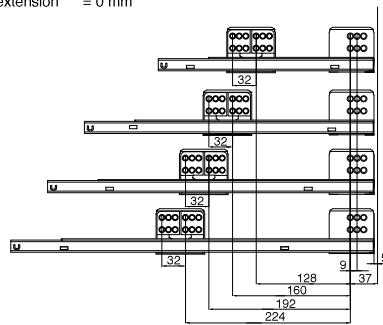
Min. internal cabinet depth = drawer length + 3 mm
Actual loss of extension = 0 mm

270, 300, 350 mm

400 mm

450 mm

500, 550 mm



60kg

Drawer Length

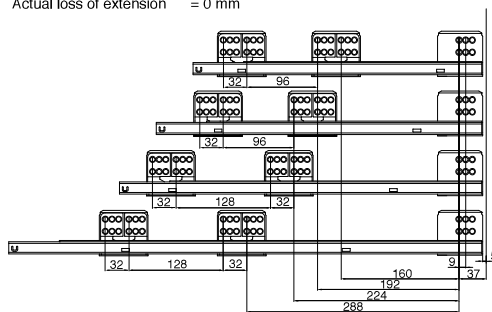
Min. internal cabinet depth = drawer length + 3 mm
Actual loss of extension = 0 mm

400 mm

450 mm

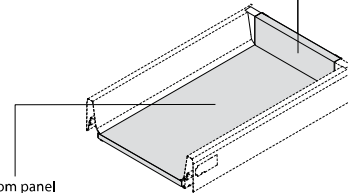
500, 550 mm

600, 650 mm



Cutting Dimensions for 16mm Chipboard

Back panel
Width = internal cabinet width - 87mm
Height = 84mm



Bottom panel
Width = internal cabinet width - 75mm
Length = drawer length - 24 mm

Pre-drilling Dimensions of Bottom Panel for fixing Euro Screws

