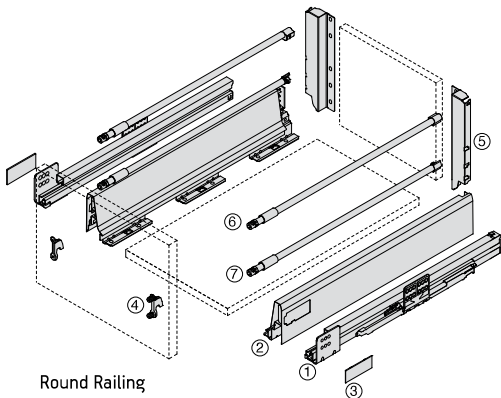
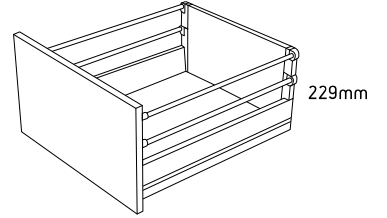


Harn Ritma

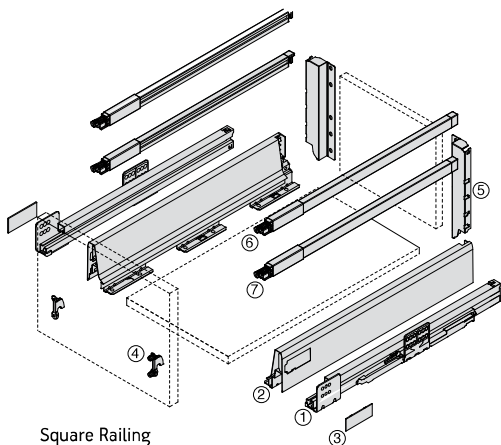


Ritma Cube Standard Drawer – HSD

- Soft close roller bearing concealed runners
- Full extension with synchro control
- Steel drawer side 96.5mm (229mm to top of railing)
- Load capacity of 35kg or 60kg
- Quick assembly
- Flexible 2-dimensional front adjustment
- Silent integrated cushioning system
- Integrated lateral stabiliser
- **Double railing set in square or traditional round style**



Round Railing



Square Railing

	Kit Part No. Screw-on 	Kit Part No. Knock-in 	Kit Part No. Expansion 	Size	Sales Unit
--	--	--	---	------	------------

Round Railing Set

White	35kg	RKS8327HSD.WH	RKK8327HSD.WH	RKE8327HSD.WH	270mm	Kit
		RKS8335HSD.WH	RKK8335HSD.WH	RKE8335HSD.WH	350mm	Kit
		RKS8340HSD.WH	RKK8340HSD.WH	RKE8340HSD.WH	400mm	Kit
		RKS8345HSD.WH	RKK8345HSD.WH	RKE8345HSD.WH	450mm	Kit
		RKS8350HSD.WH	RKK8350HSD.WH	RKE8350HSD.WH	500mm	Kit
		RKS8355HSD.WH	RKK8355HSD.WH	RKE8355HSD.WH	550mm	Kit

White	60kg	R6RKS8345HSD.WH	R6RKK8345HSD.WH	R6RKE8345HSD.WH	450mm	Kit
		R6RKS8350HSD.WH	R6RKK8350HSD.WH	R6RKE8350HSD.WH	500mm	Kit
		R6RKS8355HSD.WH	R6RKK8355HSD.WH	R6RKE8355HSD.WH	550mm	Kit

Square Railing Set

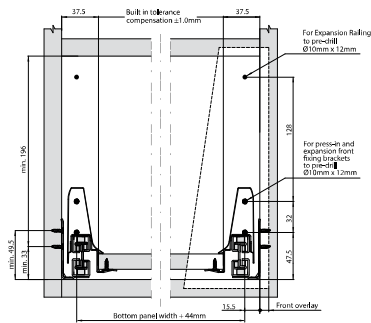
White	35kg	RKS8327HSDQ.WH	RKK8327HSDQ.WH	RKE8327HSDQ.WH	270mm	Kit
		RKS8335HSDQ.WH	RKK8335HSDQ.WH	RKE8335HSDQ.WH	350mm	Kit
		RKS8340HSDQ.WH	RKK8340HSDQ.WH	RKE8340HSDQ.WH	400mm	Kit
		RKS8345HSDQ.WH	RKK8345HSDQ.WH	RKE8345HSDQ.WH	450mm	Kit
		RKS8350HSDQ.WH	RKK8350HSDQ.WH	RKE8350HSDQ.WH	500mm	Kit
		RKS8355HSDQ.WH	RKK8355HSDQ.WH	RKE8355HSDQ.WH	550mm	Kit

White	60kg	R6RKS8345HSDQ.WH	R6RKK8345HSDQ.WH	R6RKE8345HSDQ.WH	450mm	Kit
		R6RKS8350HSDQ.WH	R6RKK8350HSDQ.WH	R6RKE8350HSDQ.WH	500mm	Kit
		R6RKS8355HSDQ.WH	R6RKK8355HSDQ.WH	R6RKE8355HSDQ.WH	550mm	Kit

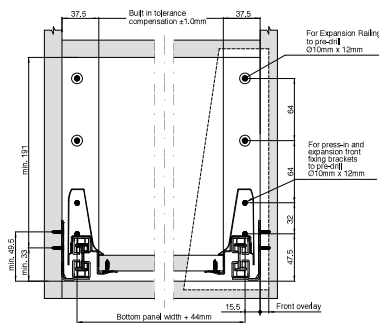
*Grey parts are included in kit

Space Requirements & Front Installation Dimensions

Round Rail

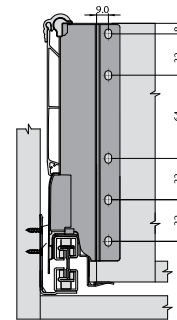


Square Rail

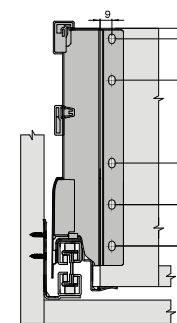


Back Installation Dimensions

Round Rail



Square Rail



Cabinet Profile Screw Positions

35kg

Drawer Length

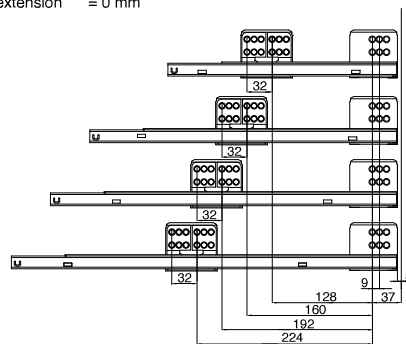
Min. internal cabinet depth = drawer length + 3 mm
Actual loss of extension = 0 mm

270, 300, 350 mm

400 mm

450 mm

500, 550 mm



60kg

Drawer Length

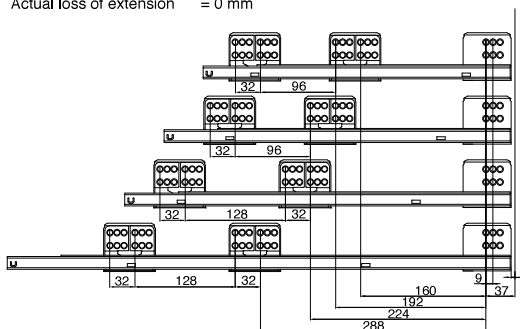
Min. internal cabinet depth = drawer length + 3 mm
Actual loss of extension = 0 mm

400 mm

450 mm

500, 550 mm

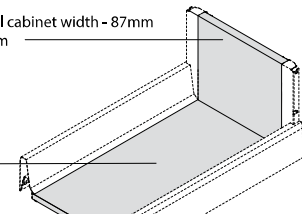
600, 650 mm



Cutting Dimensions for 16mm Chipboard

Back panel

Width = internal cabinet width - 87mm
Height = 199mm



Bottom panel

Width = Internal cabinet width - 75mm
Length = drawer length - 24 mm

Pre-drilling Dimensions of Bottom Panel for fixing Euro Screws

