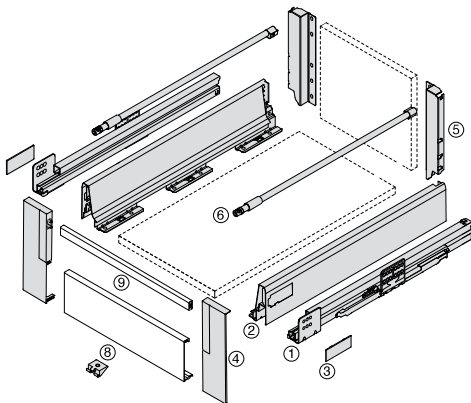
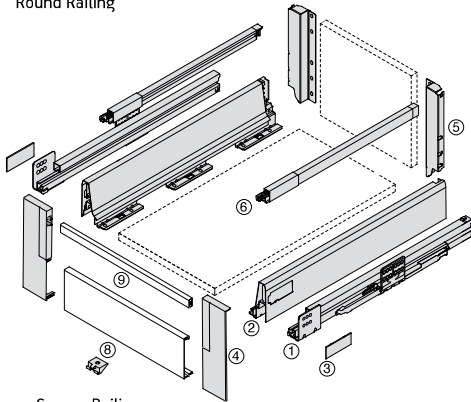


Harn Ritma



Round Railing



Square Railing

*Grey parts are included in kit

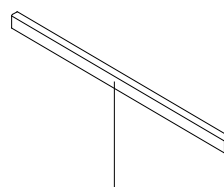
Ritma Cube Inner Drawer – HSS

- Soft close roller bearing concealed runners
- Full extension with synchro control
- Steel drawer side 83mm (229mm to top of railing)
- Round Side Rail and Square Side Rail options
- Load capacity of 35kg or 60kg
- Quick assembly
- Sylent integrated cushioning system
- Integrated lateral stabiliser
- **Double railing set in square or traditional round style**

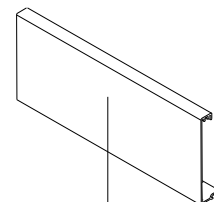


| | Kit Part No. | Size | Sales Unit |
|---------------------------|------------------|-------|------------|
| Round Railing Set | | | |
| White 35kg | RKI8327HSS.WH | 270mm | Kit |
| | RKI8335HSS.WH | 350mm | Kit |
| | RKI8340HSS.WH | 400mm | Kit |
| | RKI8345HSS.WH | 450mm | Kit |
| | RKI8350HSS.WH | 500mm | Kit |
| | RKI8355HSS.WH | 550mm | Kit |
| White 60kg | R6RKI8345HSS.WH | 450mm | Kit |
| | R6RKI8350HSS.WH | 500mm | Kit |
| | R6RKI8355HSS.WH | 550mm | Kit |
| Square Railing Set | | | |
| White 35kg | RKI8327HSSQ.WH | 270mm | Kit |
| | RKI8335HSSQ.WH | 350mm | Kit |
| | RKI8340HSSQ.WH | 400mm | Kit |
| | RKI8345HSSQ.WH | 450mm | Kit |
| | RKI8350HSSQ.WH | 500mm | Kit |
| | RKI8355HSSQ.WH | 550mm | Kit |
| White 60kg | R6RKI8345HSSQ.WH | 450mm | Kit |
| | R6RKI8350HSSQ.WH | 500mm | Kit |
| | R6RKI8355HSSQ.WH | 550mm | Kit |

Cutting Dimensions



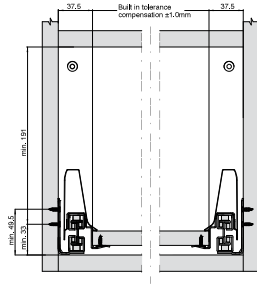
Internal Cabinet Width -122mm



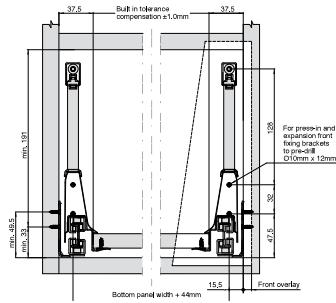
Internal Cabinet Width -132mm

Space Requirements & Front Installation Dimensions

Round Rail

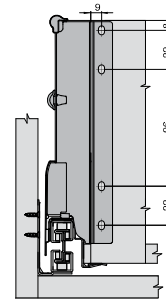


Square Rail

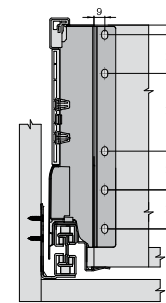


Back Installation Dimensions

Round Rail



Square Rail



Cabinet Profile Screw Positions

35kg

Drawer Length

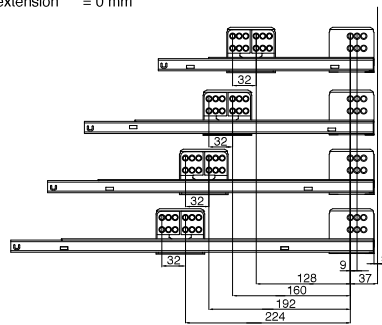
Min. internal cabinet depth = drawer length + 3 mm
Actual loss of extension = 0 mm

270, 300, 350 mm

400 mm

450 mm

500, 550 mm



60kg

Drawer Length

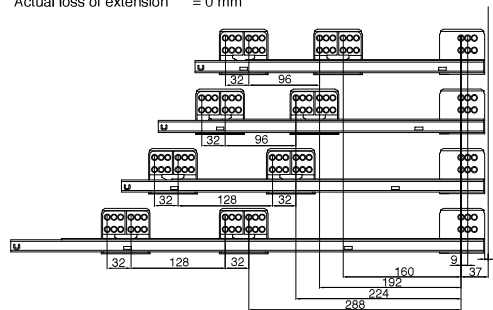
Min. internal cabinet depth = drawer length + 3 mm
Actual loss of extension = 0 mm

400 mm

450 mm

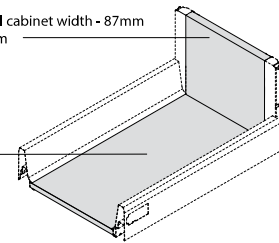
500, 550 mm

600, 650 mm



Cutting Dimensions for 16mm Chipboard

Back panel
Width = internal cabinet width - 87mm
Height = 199mm



Bottom panel
Width = Internal cabinet width - 75mm
Length = drawer length - 24 mm

Pre-drilling Dimensions of Bottom Panel for fixing Euro Screws

