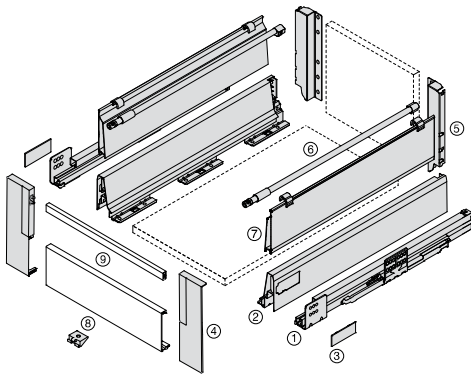
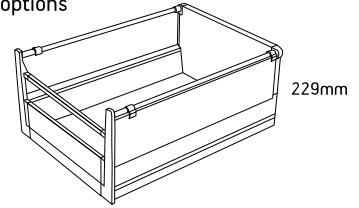


Harn Ritma

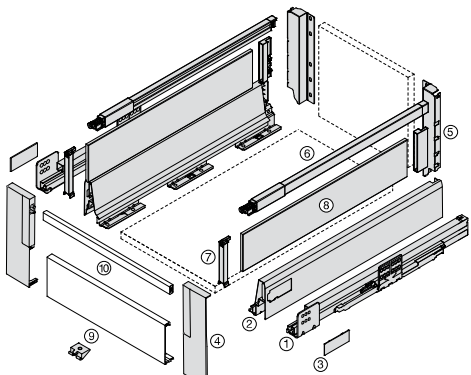


Ritma Cube Inner Drawer – HS

- Soft close roller bearing concealed runners
- Full extension with synchro control
- Steel drawer side 83mm (229mm to top of railing)
- Round Side Rail and Square Side Rail options
- Load capacity of 35kg or 60kg
- Quick assembly
- Sylent integrated cushioning system
- Integrated lateral stabiliser



Round Railing



Square Railing

Kit Part No.	Size	Sales Unit
--------------	------	------------

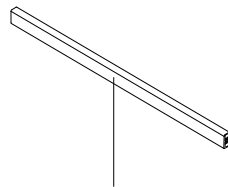
Round Railing Set			
White 35kg	RKI8335HS.WH	350mm	Kit
	RKI8340HS.WH	400mm	Kit
	RKI8345HS.WH	450mm	Kit
	RKI8350HS.WH	500mm	Kit
	RKI8355HS.WH	550mm	Kit

White 60kg	R6RKI8345HS.WH	450mm	Kit
	R6RKI8350HS.WH	500mm	Kit
	R6RKI8355HS.WH	550mm	Kit

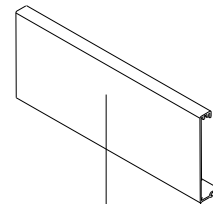
Square Railing Set			
White 35kg	RKI8335HSQ.WH	350mm	Kit
	RKI8340HSQ.WH	400mm	Kit
	RKI8345HSQ.WH	450mm	Kit
	RKI8350HSQ.WH	500mm	Kit
	RKI8355HSQ.WH	550mm	Kit

White 60kg	R6RKI8345HSQ.WH	450mm	Kit
	R6RKI8350HSQ.WH	500mm	Kit
	R6RKI8355HSQ.WH	550mm	Kit

Cutting Dimensions



Internal Cabinet Width -122mm

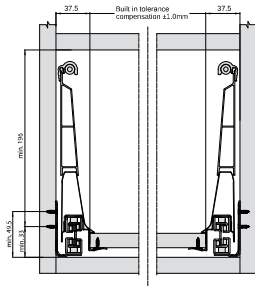


Internal Cabinet Width -132mm

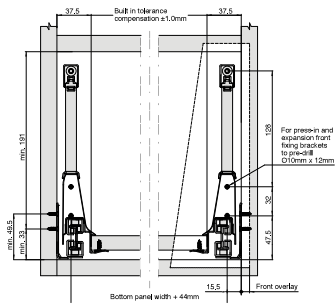
*Grey parts are included in kit

Space Requirements & Front Installation Dimensions

Round Rail

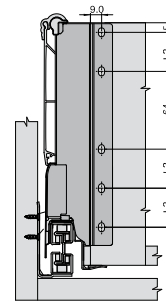


Square Rail

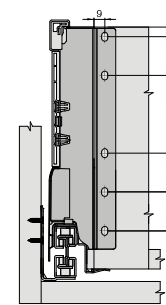


Back Installation Dimensions

Round Rail



Square Rail



Cabinet Profile Screw Positions

35kg

Drawer Length

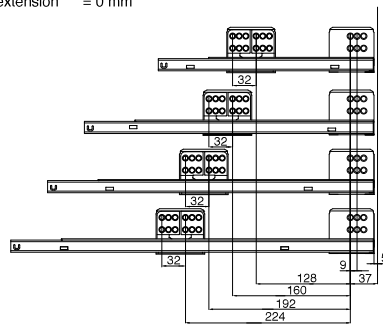
Min. internal cabinet depth = drawer length + 3 mm
Actual loss of extension = 0 mm

270, 300, 350 mm

400 mm

450 mm

500, 550 mm



60kg

Drawer Length

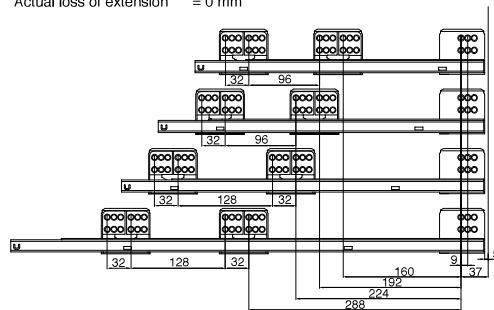
Min. internal cabinet depth = drawer length + 3 mm
Actual loss of extension = 0 mm

400 mm

450 mm

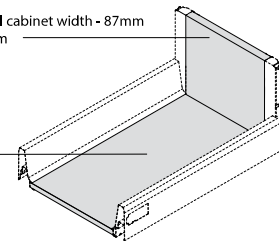
500, 550 mm

600, 650 mm



Cutting Dimensions for 16mm Chipboard

Back panel
Width = internal cabinet width - 87mm
Height = 199mm



Bottom panel
Width = Internal cabinet width - 75mm
Length = drawer length - 24 mm

Pre-drilling Dimensions of Bottom Panel for fixing Euro Screws

