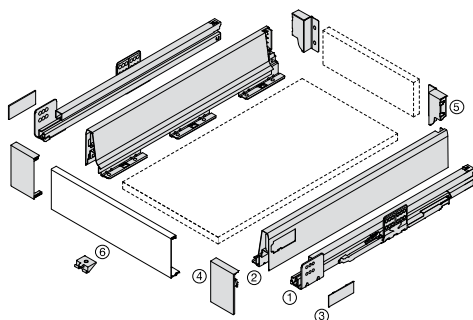
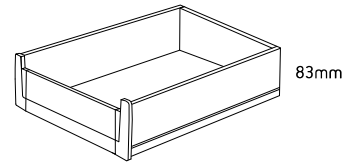


# Harn Ritma



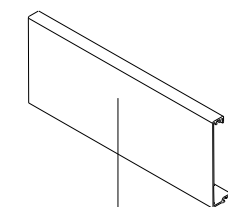
## Ritma Cube Inner Drawer – S

- Soft close roller bearing concealed runners
- Full extension with synchro control
- Steel drawer side 83mm
- Load capacity of 35kg or 60kg
- Quick assembly
- Silent integrated cushioning system
- Integrated lateral stabiliser



	Kit Part No.	Size	Sales Unit
<b>Round Railing Set</b>			
<b>White</b> 35kg	RK18327S.WH	270mm	Kit
	RK18335S.WH	350mm	Kit
	RK18340S.WH	400mm	Kit
	RK18345S.WH	450mm	Kit
	RK18350S.WH	500mm	Kit
	RK18355S.WH	550mm	Kit
<b>White</b> 60kg	R6RK18345S.WH	450mm	Kit
	R6RK18350S.WH	500mm	Kit
	R6RK18355S.WH	550mm	Kit

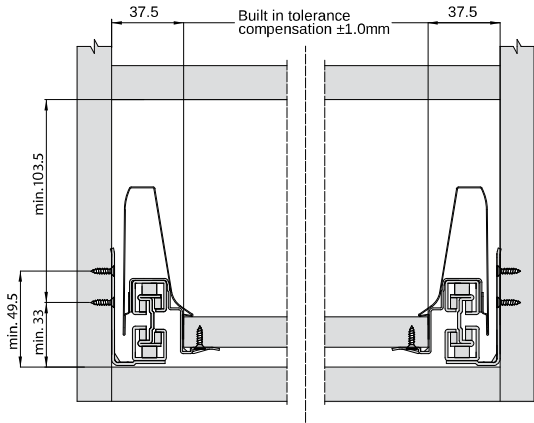
### Cutting Dimensions



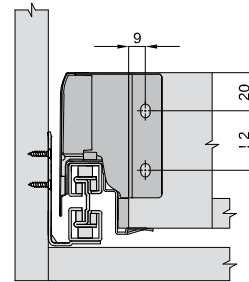
Internal Cabinet Width -132mm

\*Grey parts are included in kit

## Space Requirements & Front Installation Dimensions



## Back Installation Dimensions



## Cabinet Profile Screw Positions

**35kg**

### Drawer Length

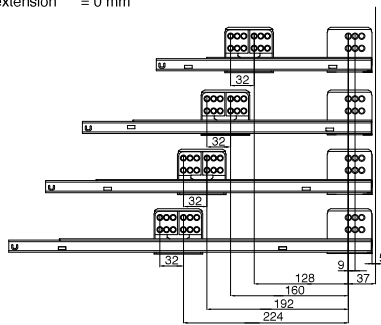
Min. internal cabinet depth = drawer length + 3 mm  
Actual loss of extension = 0 mm

270, 300, 350 mm

400 mm

450 mm

500, 550 mm



**60kg**

### Drawer Length

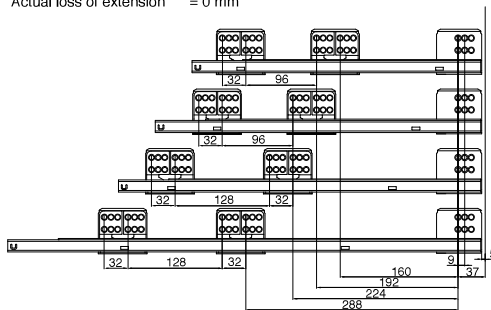
Min. internal cabinet depth = drawer length + 3 mm  
Actual loss of extension = 0 mm

400 mm

450 mm

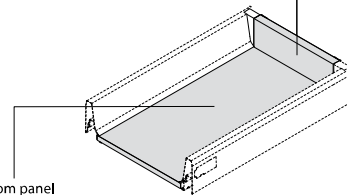
500, 550 mm

600, 650 mm



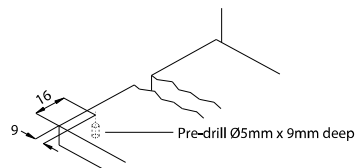
## Cutting Dimensions for 16mm Chipboard

Back panel  
Width = internal cabinet width - 87mm  
Height = 84mm



Bottom panel  
Width = Internal cabinet width - 75mm  
Length = drawer length - 24 mm

## Pre-drilling Dimensions of Bottom Panel for fixing Euro Screws



For drawers over 700mm in width we recommend the use of the Euro Orvel Lock & Support for Wide Drawers. Ref page 3.84.